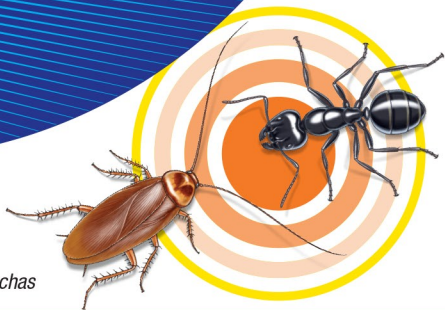


TERRO®

Ant & Roach Baits

Cebo para hormigas y cucarachas



Two baits in one station
Eliminates the need for multiple products
Highly effective on ants*, cockroaches and silverfish

PRECAUTIONARY STATEMENTS

Hazards to Humans and Domestic Animals

CAUTION: Causes moderate eye irritation. Avoid contact with skin, eyes or clothing. Wash hands thoroughly with soap and water after use and before eating, drinking, chewing gum, using tobacco, or using the toilet.

FIRST AID

If In Eyes:

- Hold eye open and rinse slowly and gently with water for 15-20 minutes.
- Remove contact lenses, if present, after the first five minutes, then continue rinsing eye.
- Call a poison control center or doctor for treatment advice.

Have the product or label with you when calling a Poison Control Center or doctor or going for treatment. In case of emergency, for additional information call 800 858 7378.

ENVIRONMENTAL HAZARDS

To protect the environment, do not allow bait to enter or run off into storm drains, drainage ditches, gutters or surface waters.

HOW IT WORKS

Ants*, roaches and silverfish will enter the pre-filled station to feed on the bait. An ant's* anatomy allows for effective transport and consumption of liquids. Ants* will come in large numbers at first, but will soon disappear. The liquid bait is specifically formulated to allow worker ants* to consume the product and survive long enough to carry the bait to the nest and deliver a dose to the rest of the colony.

DIRECTIONS FOR USE

It is a violation of Federal Law to use this product in a manner inconsistent with its labeling.

DO NOT USE in edible product areas of food handling establishments, restaurants or other areas where food is commercially prepared or processed. Do not use in serving areas while food is exposed. Avoid contamination of feed and foodstuffs. Place bait in areas inaccessible to children and pets.

FOR USE IN AND AROUND: Homes

ATTRACTS AND KILLS: **Ants:** Acrobat, Allegheny, Argentine, Big headed, Cornfield, Crazy, Ghost, Little black, Odorous house, Pavement, Pyramid, Thief, White footed, and other sweet eating ants*. **Others:** Roaches, Silverfish.

USING TERRO® ANT & ROACH BAITS: Remove other sources of food, like crumbs, sugar, and grease spots. Do not place bait stations where insecticide has recently been sprayed, as listed pests may avoid the bait stations. Common areas to place bait stations include along baseboards, in corners of rooms and cabinets, on countertops, under and behind appliances, under sinks, around pipes and water sources, in pantry, on window sills and around doorways, near garbage cans, and along ant* trails.



1. Hold bait station firmly with bait pack tab facing up. Break off the bait pack tab being careful to not spill the bait.
2. Place bait station on flat surface near where listed pests or their signs have been seen. Place additional bait stations anywhere ants*, roaches, and silverfish may enter your home. Heavily infested areas may require additional bait stations. For best results, use all bait stations to ensure sufficient supply for the listed pests.
3. Monitor placements regularly but do not interfere with the listed pests or bait stations. Replace when bait is depleted or every 3 months.

The key to successful baiting is to ensure there is always a sufficient supply of TERRO® bait when listed pests are present.

*except fire ants, pharaoh ants, carpenter ants, and harvester ants

Consulte dentro las instrucciones, las precauciones y los primeros auxilios.